



71%

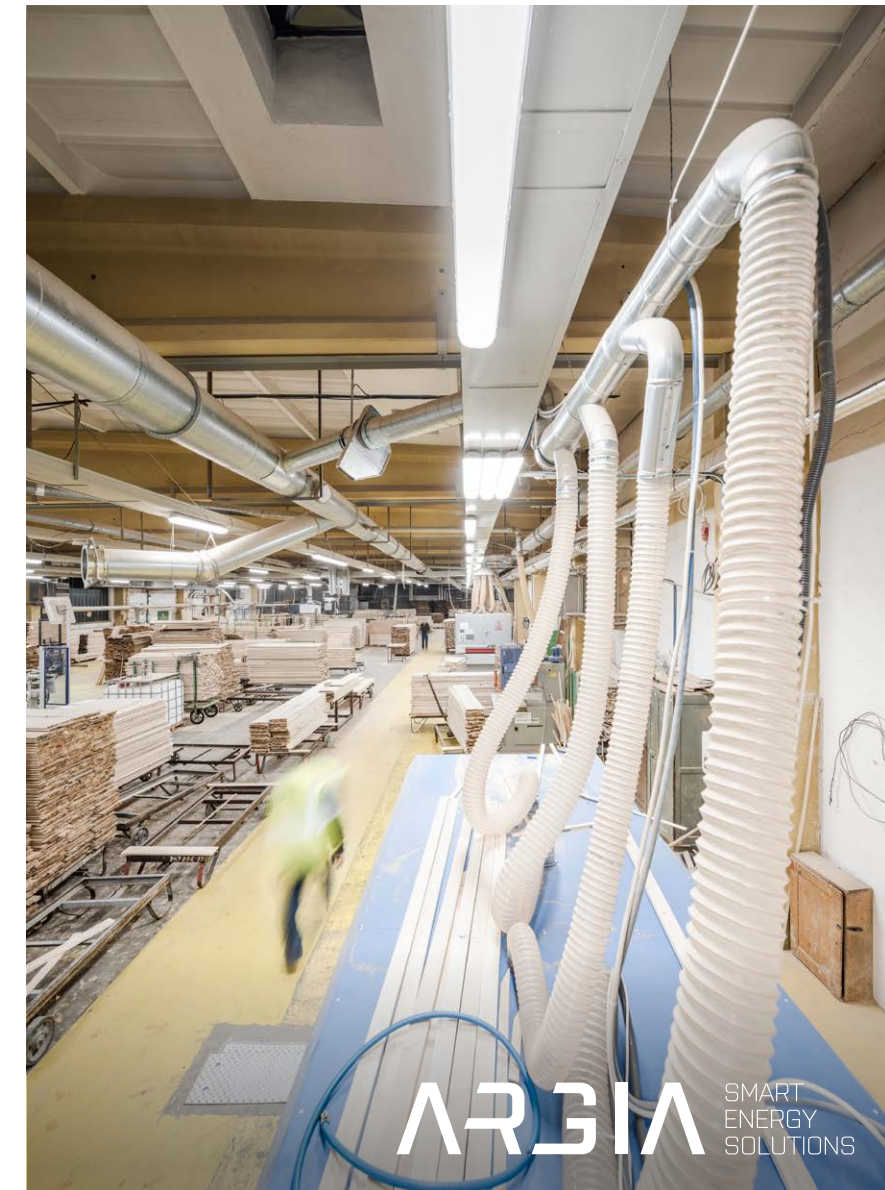
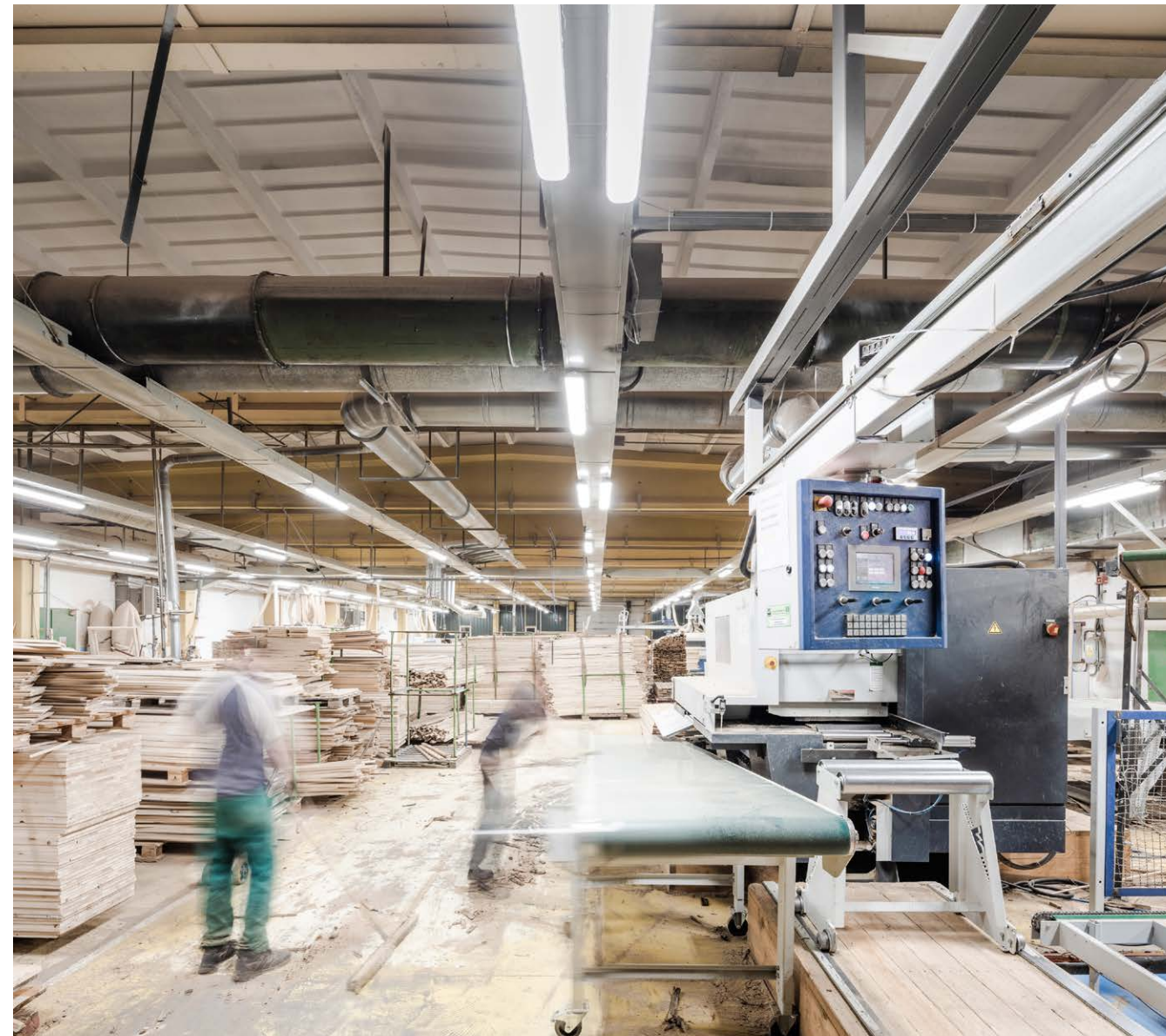
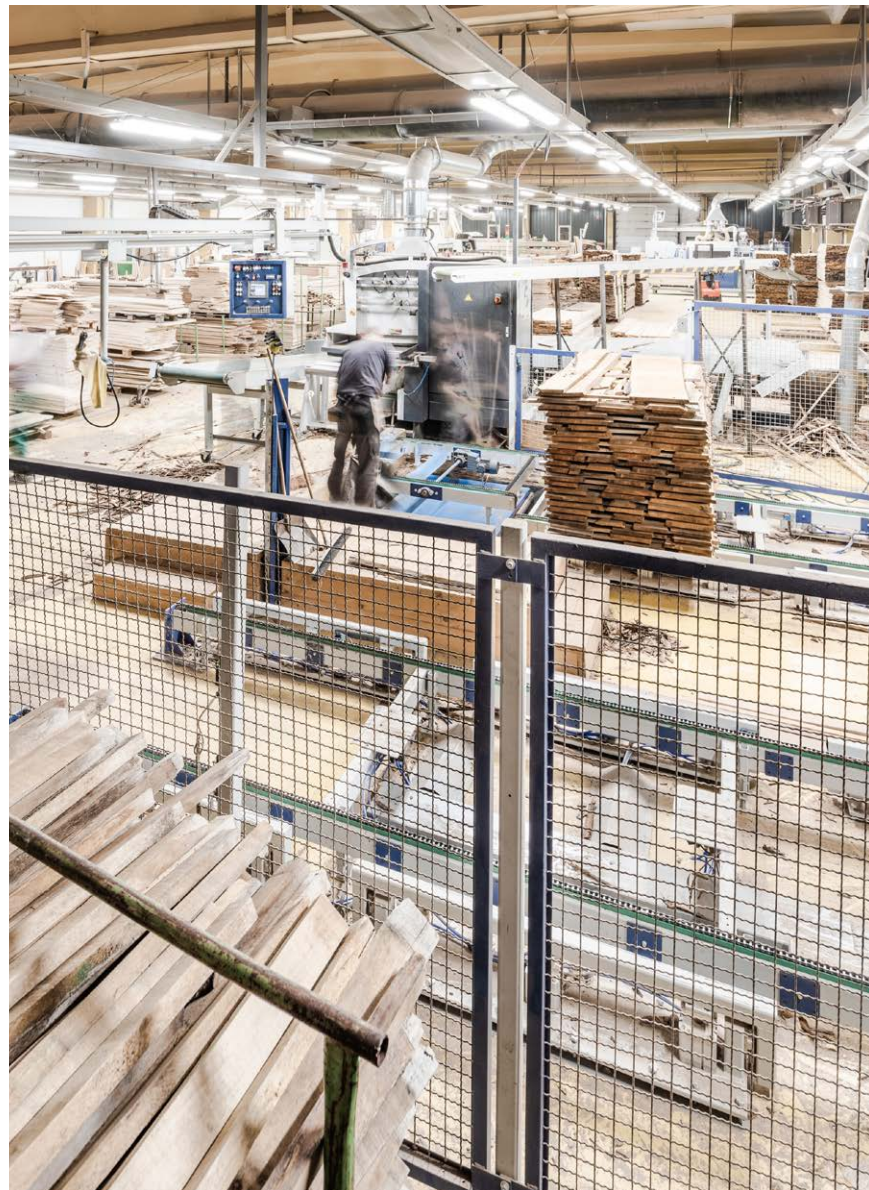
SETORA, POČÁTKY, CZE

For company SETORA, spol. s r.o., the largest supplier of high-quality wood-based coffins in the Czech Republic, we have exchanged out-of-date fluorescent luminaires for new modern LED luminaires in the wood processing area in full operation and without its interruption. The luminaires were installed on an existing guide rail and their location was adapted to the installed technology and individual workplaces. Because of the

presence of wood dust, luminaires with limited surface temperature have been chosen to avoid self-ignition of wood dust. Customer's total operating costs reduced by 71%.

	Original installation	ARGIA lighting solution
Type of luminary	T8 2x58 W IP65	INDUSTRY LINE AL
Number of luminaires	114 pcs	103 pcs
Total Input	15.73 kW	4.50 kW
Consumption kWh/year	63,431 kWh	18,144 kWh

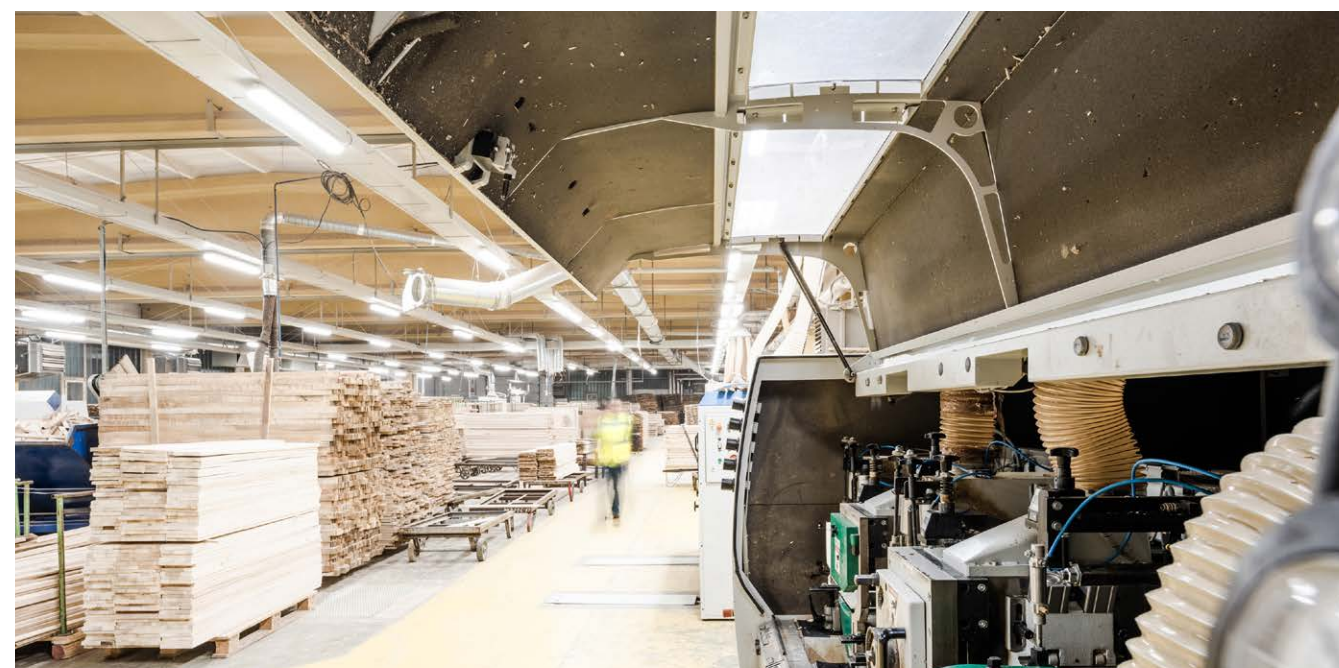
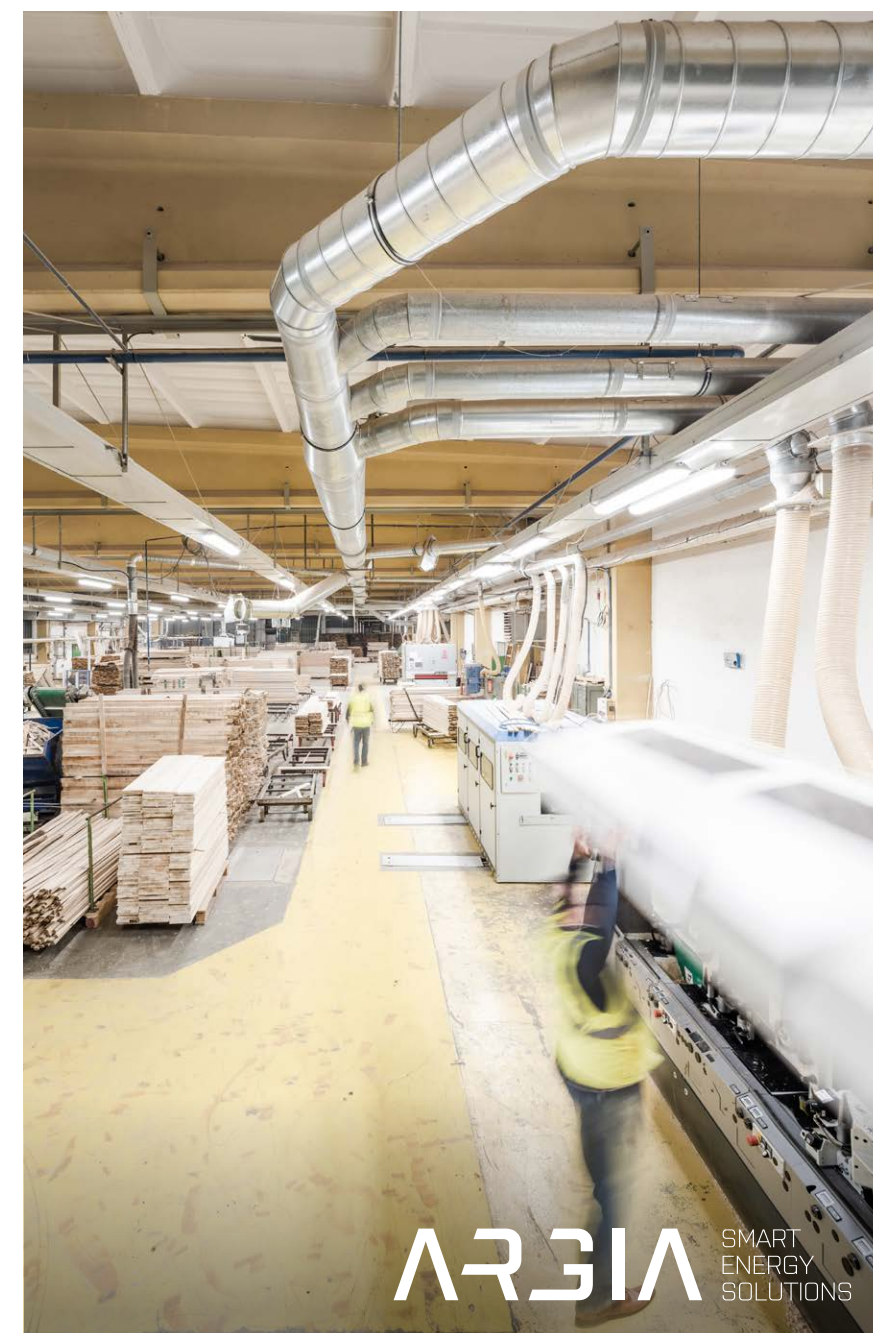
Customer's total operating costs reduced by 71%.





INDUSTRIAL LIGHTING
SETORA, POČÁTKY, CZE

www.argia.com.mx



ARGIA SMART
ENERGY
SOLUTIONS